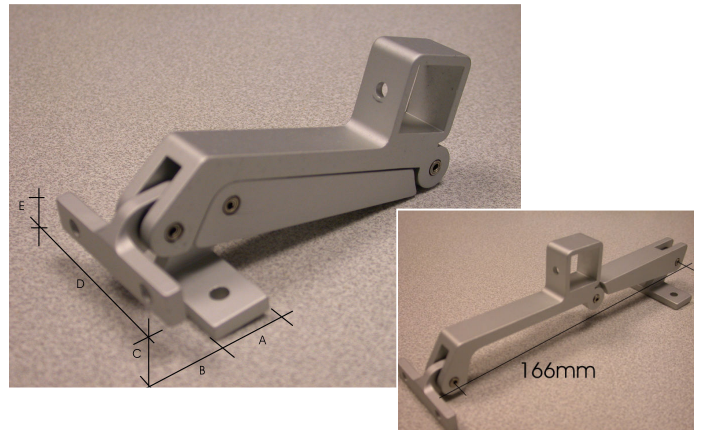


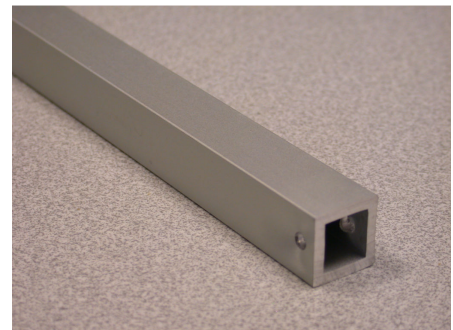
**WINDOW CAM OPENERS**

Folding window, over centre, cam openers, designed for top hung out ward opening casements, they provide effective security, a rigid stay to hold the window open, while at the same time limiting the extent of opening.  
 The stays can be used singly on narrow casements, or in tandem pairs to give greater stability or easier operation for those with manipulative impairment.  
 Finish: silver anodised aluminium



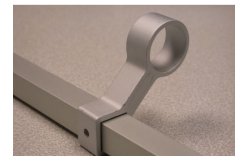
| <i>Description:</i>       | <i>A</i> | <i>B</i> | <i>C</i> | <i>D</i> | <i>E</i> | <i>Code:</i>     |
|---------------------------|----------|----------|----------|----------|----------|------------------|
| Folding window cam opener | 16mm     | 11mm     | 12mm     | 50mm     | 9mm      | <b>WB4714,SA</b> |

Horizontal link rod, for use with above when operating as tandem linked sets.  
 Silver anodised aluminium

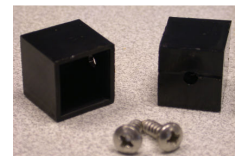


| <i>Description:</i>        | <i>Length</i> | <i>Code:</i>     |
|----------------------------|---------------|------------------|
| Horizontal tandem link rod | 400mm         | <b>WB4724,SA</b> |
| Horizontal tandem link rod | 500mm         | <b>WB4725,SA</b> |
| Horizontal tandem link rod | 600mm         | <b>WB4726,SA</b> |

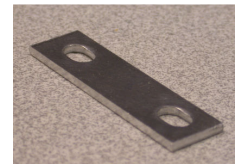
Central rod eye, allows tandem linked pairs of cam openers to be operated by a hook on a pole, for high level windows, fixes over horizontal link rod and screws into position. Silver anodised aluminium.



Black nylon end caps and fixing screws, for fitting and securing horizontal link rods



Spacer piece, to allow the cam opener to be adapted to suit particular arrangements of casement frame and bottom rail.



| <i>Description:</i>                | <i>Code:</i>     |
|------------------------------------|------------------|
| Central eye, SAA                   | <b>WB4742,SA</b> |
| Pair of end caps and screws, black | <b>WB4740,BK</b> |
| 2mm thick packer piece, SAA        | <b>WB4744,SA</b> |