

## SPILLER ARCHITECTURAL IRONMONGERY

### FLUSH AND RECESSED HANDLES

Cast aluminium flush pull, radius ended, satin silver anodised.  
Visible screw fixing.



Description:	Overall size	Aperture size	Depth:	Code:
Cast aluminium flush pull	104x40mm	80x22mm	16mm	FS1010,SA

Aluminium double pressed flush pull, fabricated from two layers of silver anodised aluminium.  
Visible screw fixing.



Description:	Overall size	Aperture size	Depth:	Code:
Pressed aluminium flush pull	76x38mm	55x21mm	13.5mm	FS1020,SA
Pressed aluminium flush pull	89x42mm	68x22mm	14mm	FS1022,SA
Pressed aluminium flush pull	102x45mm	80x25mm	15mm	FS1024,SA

Die cast zinc alloy flush pull, with chamfered edges, satin chrome finish.  
Visible screw fixings.



Description:	Overall size	Aperture size	Depth:	Code:
Die cast zinc flush pull, SCP finish	100x52mm	70x25mm	18mm	FS1064,SA

Stainless steel flush pull handle, radius ended.  
Concealed fixings  
Grade 3:16 material.



Description:	Overall size	Aperture size	Depth:	Code:
Stainless steel flush pull handle	152x60mm	95x43mm	20mm	FS1086,SS

# SPILLER ARCHITECTURAL IRONMONGERY

## FLUSH AND RECESSED HANDLES

Hewi coloured nylon flush pull handle.  
 Concealed fixing  
 Available in the full range of Hewi colours. Add colour suffix to create complete part number:  
 Buttercup Yellow/13, Burgundy/30, Ruby Red/33, Steel blue/50, Ultra marine blue(as illustration)/53, Forest Green/70, Chocolate Brown/80, Black/90, Anthracite Grey/92, Stone Grey/95, White/99.



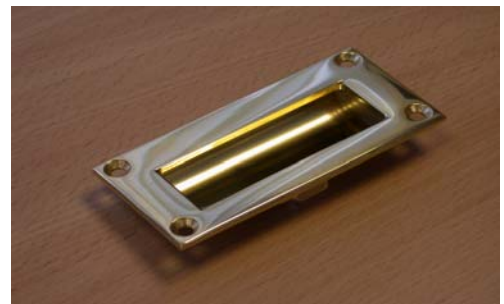
Description:	Overall size	Aperture size	Depth:	Code:
Hewi rectangular flush pull	100x60mm	86x30mm	15mm	FS1610,??

Polished brass double pressed flush pull,  
 fabricated from two layers of polished and lacquered brass.  
 Visible screw fixing.



Description:	Overall size	Aperture size	Depth:	Code:
Pressed brass flush pull	76x38mm	55x21mm	13.5mm	FS2020,PB
Pressed brass flush pull	89x42mm	68x22mm	14mm	FS2022,PB
Pressed brass flush pull	102x45mm	80x25mm	15mm	FS2024,PB

Cast brass flush pull handle, polished and lacquered finish.  
 Visible screw fixings.



Description:	Overall size	Aperture size	Depth:	Code:
Cast brass flush pull	89x41mm	62x20mm	12mm	FS2042,PB

Antique iron flush pull. Malleable iron, with semi matt black powder coated finish.  
 Visible screw fixings.



Description:	Overall size	Aperture size	Depth:	Code:
Antique iron flush pull	113x50mm	76x24mm	20mm	FS8010,DB

## SPILLER ARCHITECTURAL IRONMONGERY

### FLUSH AND RECESSED HANDLES

Mortice hook bolt latch and flush handle set, with toilet door privacy facility, for sliding doors. Mortice hook bolt latch 42.5mm backset, (minimum door style width 75mm) with BZP forend, pressed brass flush pull, with lever grip to operate latch. Privacy snib will "lock" the operating lever, with screwdriver emergency release from outside. Available in polished brass and satin chrome finishes.



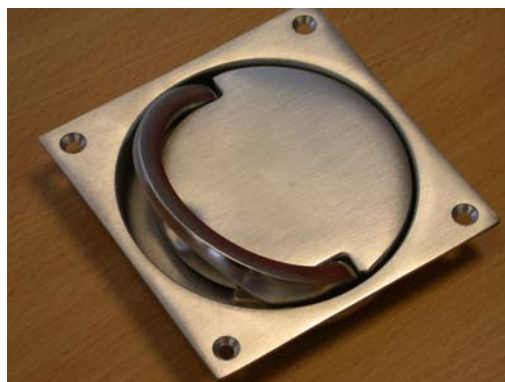
Description:	Overall size	Aperture size	Depth:	Code:
Brass sliding door latch and pull	99x63mm	76x50mm	12mm	LB2375,PB
SCP sliding door latch and pull	99x63mm	76x50mm	12mm	LB2375,SC

Hot stamped brass flush turning ring handle, to accept 7.6mm square spindle. Visible screw fixings. Available in BMA finish on brass, Polished chrome, satin chrome, and polished and lacquered brass.



Description:	Overall size	Aperture size	Depth:	Code:
BMA finish flush turn ring handle	76x76mm	65mm dia.	15mm	FS2100,IB
Pol chrome flush turn ring handle	76x76mm	65mm dia.	15mm	FS2100,CP
SCP flush turn ring handle	76x76mm	65mm dia.	15mm	FS2100,SC
Pol brass finish flush turn ring handle	76x76mm	65mm dia.	15mm	FS2100,PB

Squash court fully flush turning ring handle, to accept 8mm square spindle. Cast brass body, available in polished brass and satin chrome finishes (Other plated finishes available to order). Ideal for use in squash courts or as a lifting ring handle in floors where a fully flush finish is required.

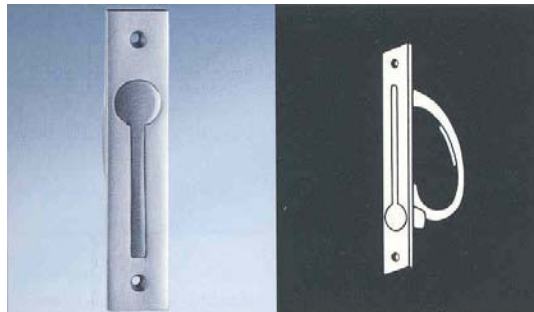


Description:	Overall size	Aperture size	Depth:	Code:
Pol brass, squash court flush ring	90x90mm	80mm dia	14mm	FS2120,PB
Satin Chrome squash court flush ring	90x90mm	80mm dia	14mm	FS2120,SC

## SPILLER ARCHITECTURAL IRONMONGERY

### FLUSH AND RECESSED HANDLES

Counter balanced flush pull handle for fitting to the leading edge of "Pocket" sliding doors. Pull gravity folds back into mortice when not in use, extended by pushing circular section on forend. Silver anodised aluminium.



Description:	Overall size	Aperture size	Depth:	Code:
Counter balance flush pull, SAA	137x27mm			FS3010,SA

Black malleable iron heavy duty flush pull handle, with central grip bar. Black prime paint finish.



Description:	Overall size	Aperture size	Depth:	Code:
Black malleable iron flush pull	141x80mm	95x45mm	28mm	FS8065,BB

Heavy black iron lift ring handle. Malleable iron with black prime paint finish.



Description:	Overall size	Aperture size	Depth:	Code:
Black malleable iron flush lift ring	127x102mm	78mm dia	18mm	FS8115,BB

Pressed steel chest or lifting handle, with grip that folds flat. Prime black paint finish.



Description:	Overall size	Aperture size	Depth:	Code:
Pressed steel chest handle, black	108x116mm			FS8100,BJ

# SPILLER ARCHITECTURAL IRONMONGERY

## FLUSH AND RECESSED HANDLES

Circular flush lift ring, cast brass available in either polished and lacquered brass or satin chrome finish.



Description:	Overall size	Aperture size	Depth:	Code:
Polished brass ring lift	50mm dia.	32mm dia.	18mm	FS2512,PB
Satin chrome on brass ring lift	50mm dia.	32mm dia.	18mm	FS2512,SC

Rectangular flush lift ring, cast brass available in either polished and lacquered brass or satin chrome finish.



Description:	Overall size	Aperture size	Depth:	Code:
Polished brass ring lift	51x39mm	27mm	15mm	FS2522,PB
Satin chrome on brass ring lift	51x39mm	27mm	15mm	FS2522,SC

Flush lift ring catch, cast brass, with sprung latch bolt.  
Available in either polished and lacquered brass or satin chrome finish.



Description:	Overall size	Aperture size	Depth:	Code:
Polished brass ring lift catch	51x39mm	27mm	15mm	FS2612,PB
Satin chrome on brass ring lift catch	51x39mm	27mm	15mm	FS2612,SC